



**REGIONAL SPECIALISED METEOROLOGICAL CENTRE-TROPICAL CYCLONES, NEW DELHI
SPECIAL TROPICAL WEATHER OUTLOOK**

DEMS-RSMC SPECIAL TROPICAL CYCLONES NEW DELHI DATED 16.12.2022

SPECIAL TROPICAL WEATHER OUTLOOK FOR NORTH INDIAN OCEAN (THE BAY OF BENGAL AND THE ARABIAN SEA) VALID FOR NEXT 120 HOURS ISSUED AT 1500 UTC OF 16.12.2022 BASED ON 1200 UTC OF 16.12.2022.

ARABIAN SEA:

(A) DEEP DEPRESSION WEAKENED INTO DEPRESSION OVER WESTCENTRAL & ADJOINING EASTCENTRAL ARABIAN SEA

DEEP DEPRESSION OVER EASTCENTRAL & ADJOINING WESTCENTRAL ARABIAN SEA MOVED WEST-NORTHWESTWARDS WITH A SPEED OF 11 KMPH DURING PAST 06 HOURS, WEAKENED INTO A DEPRESSION AND LAY CENTERED AT 1200UTC OF TODAY, THE 16TH DECEMBER 2022 OVER WESTCENTRAL & ADJOINING EASTCENTRAL ARABIAN SEA NEAR LATITUDE 14.0°N AND LONGITUDE 63.8°E ABOUT 1020 KM WEST-NORTHWEST OF AMINIDIVI (43311), 1090 KM WEST-SOUTHWEST OF PANJIM (43192) AND 1090 KM EAST-SOUTHEAST OF SALALAH (41316).

IT IS VERY LIKELY TO MOVE NEARLY WESTWARDS AND WEAKEN GRADUALLY INTO A WELL MARKED LOW PRESSURE AREA BY 17TH DECEMBER EVENING(1200UTC OF 17TH).

FORECAST TRACK AND INTENSITY:

DATE/TIME (UTC)	FORECAST LEAD PERIOD	POSITION (LAT. °N/LONG. °E)	MAXIMUM SUSTAINED SURFACE WIND SPEED (KMPH)	CATEGORY OF CYCLONIC DISTURBANCE
16.12.22/1200	00	14.0/63.8	45-55 GUSTING TO 65	DEPRESSION
17.12.22/0000	12	14.2/62.5	40-50 GUSTING TO 60	DEPRESSION
17.12.22/1200	24	14.2/61.2	25-35 GUSTING TO 45	WELL MARKED LOW PRESSURE AREA

AS PER INSAT 3D IMAGERY, INTENSITY OF THE SYSTEM IS T1.5/2.0. THE ASSOCIATED CLOUD MASS IS SHEARED TO THE NORTHEAST OF SYSTEM CENTRE, UNDER THE INFLUENCE OF MID-LATITUDE WESTERLY WINDS. SCATTERED TO BROKEN LOW AND MEDIUM CLOUDS WITH EMBEDDED INTENSE TO VERY INTENSE CONVECTION LAY OVER EASTCENTRAL ARABIAN SEA & ADJOINING WESTCENTRAL ARABIAN SEA BETWEEN LATITUDE 13.5°N & 18.0°N AND LONG 64.0°E & 68.5°E. MINIMUM CLOUD TOP TEMPERATURE IS MINUS 81°CELCIUS.

ASSOCIATED MAXIMUM SUSTAINED WIND SPEED IS 25 KNOTS GUSTING TO 35KTS. THE ESTIMATED CENTRAL PRESSURE IS 1002 HPA. SEA CONDITION IS LIKELY TO BE ROUGH

OVER WESTCENTRAL AND ADJOINING AREAS OF EASTCENTRAL & SOUTHWEST ARABIAN SEA.

BAY OF BENGAL:

(B) LOW PRESSURE AREA OVER SOUTHEAST BAY OF BENGAL AND ADJOINING AREAS OF EAST EQUATORIAL INDIAN OCEAN

THE **LOW PRESSURE AREA** OVER SOUTHEAST BAY OF BENGAL & ADJOINING AREAS OF EAST EQUATORIAL INDIAN OCEAN PERSISTS OVER THE SAME REGION AT 1200 UTC OF 16TH DECEMBER. IT IS LIKELY TO MOVE GRADUALLY WESTWARDS AND MAINTAIN ITS INTENSITY OVER SOUTH BAY OF BENGAL TILL 0000 UTC OF 17TH DECEMBER 2022.

SCATTERED TO BROKEN LOW AND MEDIUM CLOUDS WITH EMBEDDED INTENSE TO VERY INTENSE CONVECTION LAY OVER SOUTHEAST BAY OF BENGAL AND ADJOINING EQUATORIAL INDIAN OCEAN BETWEEN LATITUDE 4.0°N & 9.0°N AND LONG 90.0°E & 93.5°E. MINIMUM CLOUD TOP TEMPERATURE IS MINUS 93°C.

ASSOCIATED MAXIMUM SUSTAINED WIND SPEED IS 10-15 KNOTS GUSTING TO 25 KNOTS AROUND SYSTEM CENTRE. THE ESTIMATED CENTRAL PRESSURE IS 1007 HPA. SEA CONDITION IS LIKELY TO BE ROUGH OVER SOUTHEAST BAY OF BENGAL AND ADJOINING AREAS OF EQUATORIAL INDIAN OCEAN.

PROBABILITY OF CYCLOGENESIS (FORMATION OF DEPRESSION) DURING NEXT 120 HRS:

24 HOURS	24-48 HOURS	48-72 HOURS	72-96 HOURS	96-120 HOURS
NIL	NIL	NIL	NIL	NIL

REMARKS:

ARABIAN SEA:

SEA SURFACE TEMPERATURE IS ABOUT 26-28°C OVER WESTCENTRAL AND ADJOINING EASTCENTRAL & SOUTH ARABIAN SEA BECOMING 26°C TO THE WEST OF 65°E. LOW LEVEL RELATIVE VORTICITY IS AROUND $100 \times 10^{-6} \text{ S}^{-1}$ TO THE SOUTHWEST OF THE SYSTEM CENTRE. LOW LEVEL CONVERGENCE HAS DECREASED AND IS ABOUT $05 \times 10^{-5} \text{ S}^{-1}$ TO THE SOUTH OF SYSTEM CENTRE. HOWEVER, NEGATIVE CONVERGENCE ZONE IS SEEN OVER WESTCENTRAL ARABIAN SEA ALONG FORECAST TRACK. SIMILARLY, UPPER LEVEL DIVERGENCE HAS DECREASED AND IS ABOUT $10 \times 10^{-5} \text{ S}^{-1}$ TO THE NORTHEAST OF THE SYSTEM CENTRE AND A ZONE OF NEGATIVE DIVERGENCE IS SEEN IN THE FORWARD SECTOR, ALONG THE FORECAST TRACK. MODERATE TO HIGH VERTICAL WIND SHEAR OF ABOUT 15-20 KNOTS IS PREVAILING AROUND THE SYSTEM CENTRE. AND IS BECOMING HIGH ALONG THE FORECAST TRACK OVER WESTCENTRAL ARABIAN SEA. TOTAL PRECIPITABLE WATER IMAGERY IS INDICATING WEAKENING IN WARM MOIST AIR AROUND THE SYSTEM AREA. DRY COLD AIR INTRUSION IS REACHING THE OUTER CORE UPTO NORTHEAST SECTOR. MULTI-SATELLITE WINDS ARE INDICATING STRONGER WINDS IN THE NORTHEAST SECTOR AND THUS, THE SHEARING OF CONVECTIVE CLOUD MASS TO THE NORTHEAST.

THESE ENVIRONMENTAL FEATURES (COLDER SEA, DRY COLD AIR INTRUSION, HIGH TO MODERATE VERTICAL WIND SHEAR, DECREASE IN MOISTURE IN MIDDLE LEVELS) INDICATE THAT THE SYSTEM IS GRADUALLY ENTERING INTO UNFAVOURABLE

ENVIRONMENT LEADING TO FURTHER WEAKENING OF THE SYSTEM INTO A WELL MARKED LOW PRESSURE AREA BY 1200 UTC OF 17TH DECEMBER.

VARIOUS MODELS INDICATE THAT IS VERY LIKELY TO MOVE NEARLY WESTWARDS AND WEAKEN GRADUALLY INTO A WELL MARKED LOW PRESSURE AREA BY 17TH DECEMBER EVENING(1200UTC OF 17TH).

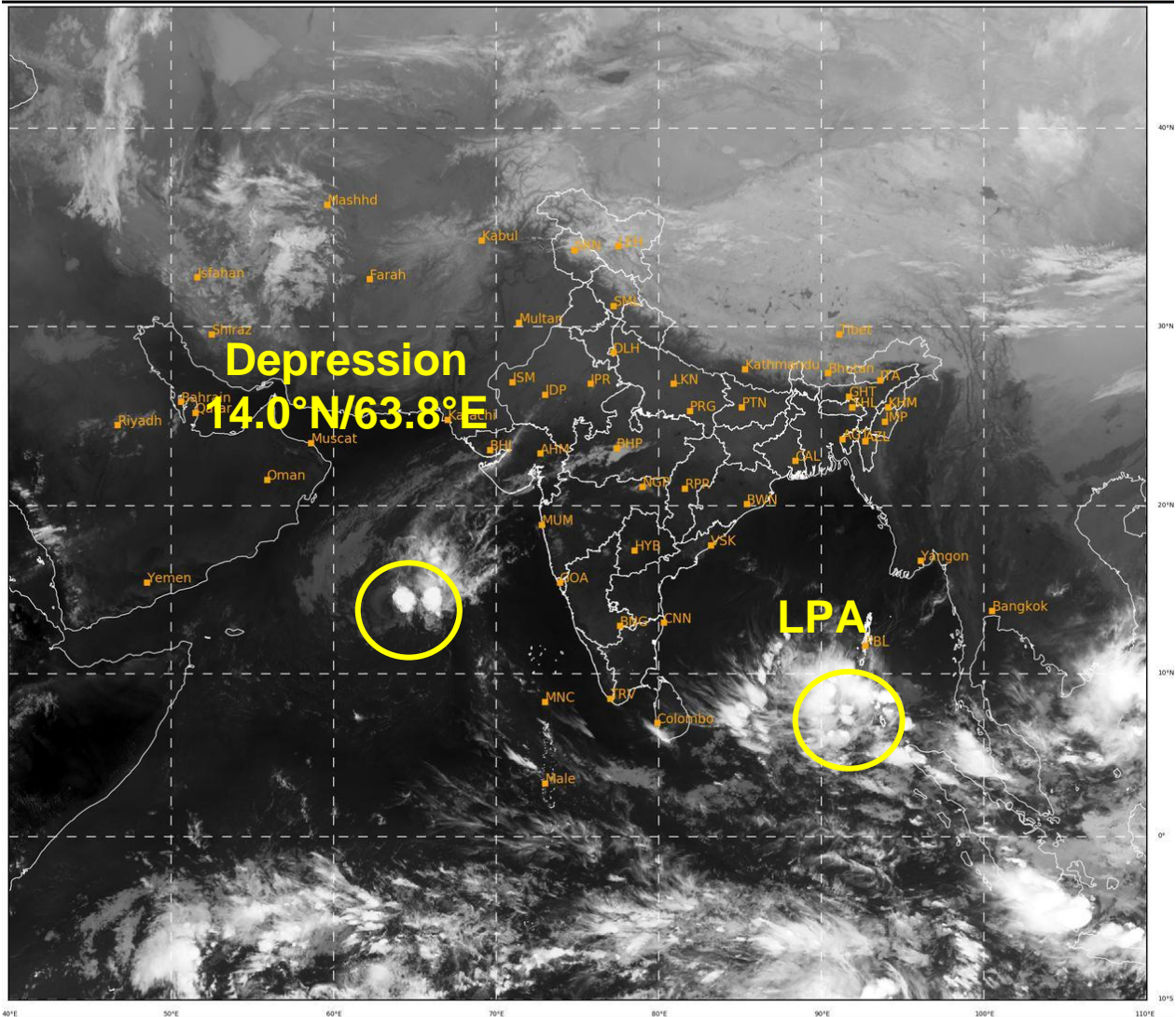
BAY OF BENGAL:

SEA SURFACE TEMPERATURE IS ABOUT 28-29°C OVER SOUTH BOB AND ADJOINING EQUATORIAL INDIAN OCEAN. LOW LEVEL RELATIVE VORTICITY IS AROUND $60 \times 10^{-6} \text{ S}^{-1}$ OVER SOUTH ANDAMAN SEA AND ADJOINING EQUATORIAL INDIAN OCEAN. LOW LEVEL CONVERGENCE IS ABOUT $10 \times 10^{-5} \text{ S}^{-1}$ OVER SOUTHEAST BOB AND ADJOINING AREAS. UPPER LEVEL DIVERGENCE IS ABOUT $10 \times 10^{-5} \text{ S}^{-1}$ OVER SOUTHEAST BOB AND ADJOINING EQUATORIAL INDIAN OCEAN. MODERATE VERTICAL WIND SHEAR OF ABOUT 15-20 KNOTS IS PREVAILING AROUND SYSTEM AREA OVER SOUTHEAST BOB & ADJOINING AREAS. UPPER TROPOSPHERIC RIDGE IS SEEN NEAR 12.5N. THE EASTERLY WINDS IN THE LOWER TROPOSPHERIC LEVELS ARE STEERING THE SYSTEM NEARLY WESTWARDS.

MOST OF THE MODELS ARE INDICATING EXISTING LOW PRESSURE AREA OVER SOUTHEAST BOB AND ADJOINING EAST INDIAN OCEAN TO MOVE WESTWARDS TILL 17TH MORNING AND WEAKEN THEREAFTER.

IN VIEW OF ABOVE, THE LOW PRESSURE AREA OVER SOUTHEAST BAY OF BENGAL & ADJOINING AREAS OF EAST EQUATORIAL INDIAN OCEAN IS LIKELY TO MOVE GRADUALLY WESTWARDS AND MAINTAIN ITS INTENSITY OVER SOUTH BAY OF BENGAL TILL 0000UTC OF 17TH DECEMBER 2022.

**(RK JENAMANI)
SCIENTIST-F
RSMC NEW DELHI**



424

951

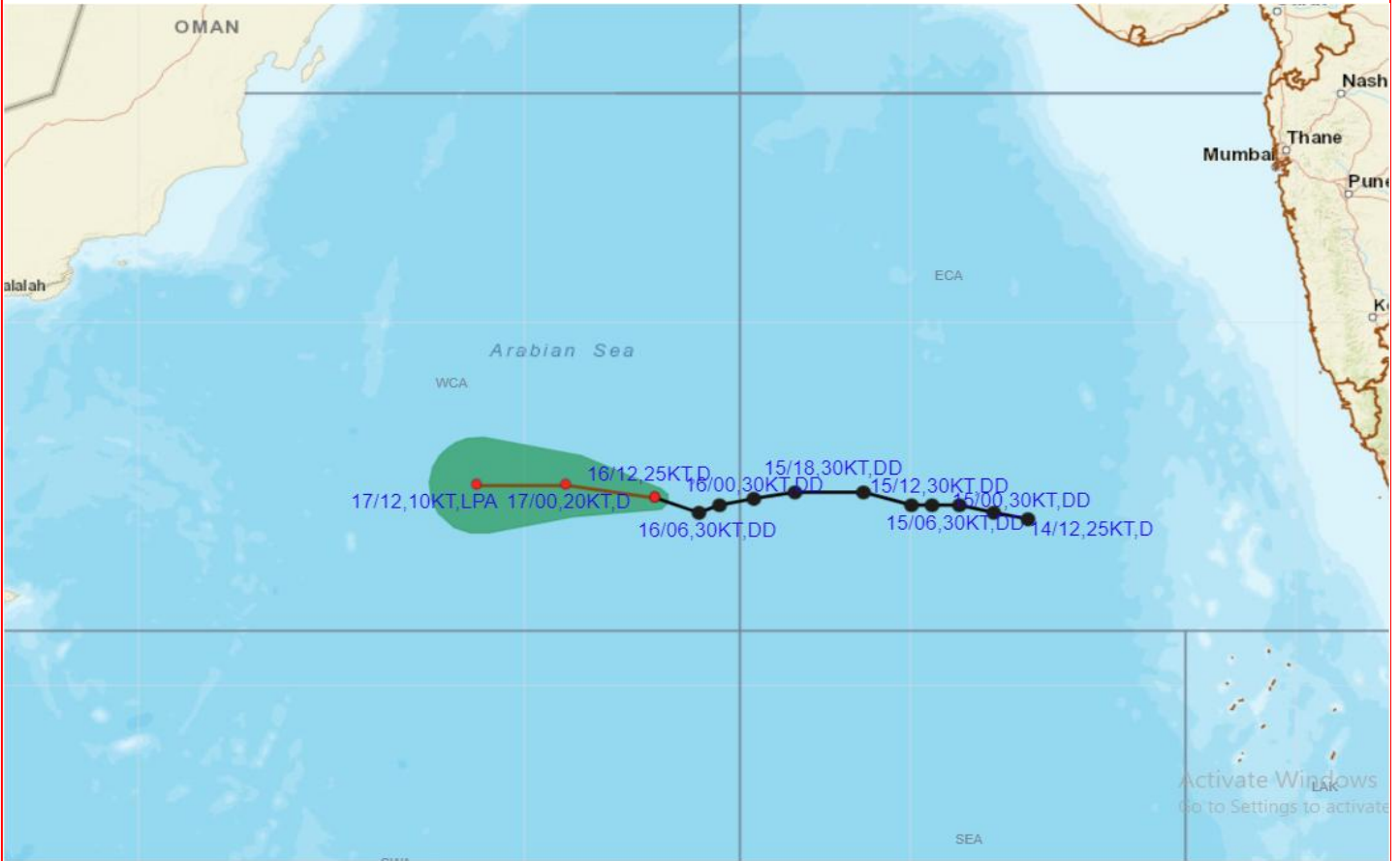
IMD, DELHI

LPA: Low Pressure Area

Cloud distribution: (a) Isolated: <25%, Scattered:25-50%, Broken: 51-75%, Solid:>75%, Convection Intensity: (a) Weak: Cloud Top Temperature (CTT) >-25°C, (b) Moderate: CTT: - 25°C to -40°C, (c) Intense: CTT: - 41°C to -70°C and (d) Very Intense: : Less than -70°C
PROBABILITY OF CYCLOGENESIS (FORMATION OF DEPRESSION): NIL: 0%, LOW: 1-33%, , MODERATE: 34-66% AND HIGH: 67-100%
This is a guidance Bulletin for WMO/ESCAP Panel Member countries. Visit respective National websites for Country specific Bulletins



OBSERVED AND FORECAST TRACK OF DEPRESSION OVER EASTCENTRAL ADJOINING WESTCENTRAL ARABIAN SEA BASED ON 1200 UTC OF 16TH DECEMBER, 2022

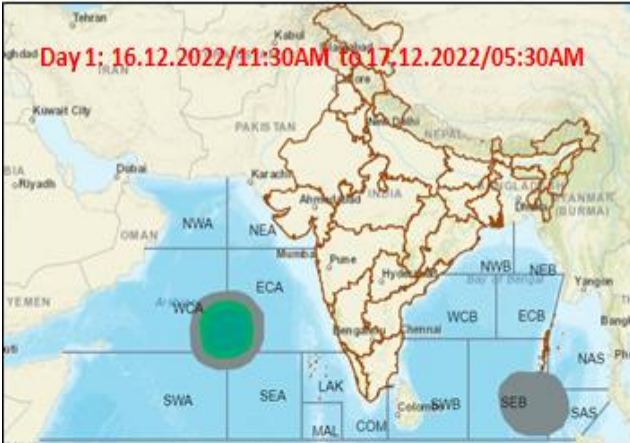


DATE/TIME IN UTC
IST=UTC + 0530
L: LOW PRESSURE AREA
WML: WELL MARKED LOW PRESSURE AREA
D: DEPRESSION (17-27 KT)
DD: DEEP DEPRESSION (28-33 KT)
CS: CYCLONIC STORM (34-47 KT)
SCS: SEVERE CYCLONIC STORM (48-63KT)
VSCS: VERY SEVERE CYCLONIC STORM (64-89 KT)
ESCS: EXTREMELY SEVERE CYCLONIC STORM (90-119 KT)
SuCS: SUPER CYCLONIC STORM (≥20 KT)

- LESS THAN 34 KT
- 34-47 KT
- ≥ 48 KT
- OBSERVED TRACK
- FORECAST TRACK
- CONE OF UNCERTAINTY

Cloud distribution: (a) Isolated: <25%, Scattered:25-50%, Broken: 51-75%, Solid:>75%, Convection Intensity: (a) Weak: Cloud Top Temperature (CTT) >-25°C, (b) Moderate: CTT: - 25°C to -40°C, (c) Intense: CTT: - 41°C to -70°C and (d) Very Intense: : Less than -70°C
PROBABILITY OF CYCLOGENESIS (FORMATION OF DEPRESSION): NIL: 0%, LOW: 1-33%, , MODERATE: 34-66% AND HIGH: 67-100%
 This is a guidance Bulletin for WMO/ESCAP Panel Member countries. Visit respective National websites for Country specific Bulletins

Fishermen warning graphics



Squally WX with wind speed 40-45 kmph gusting to 55 kmph

Squally wind speed 45-55 kmph gusting to 65 kmph

Squally wind speed 55-65 kmph gusting to 75 kmph

Fishermen are advised not to venture into the marked areas.